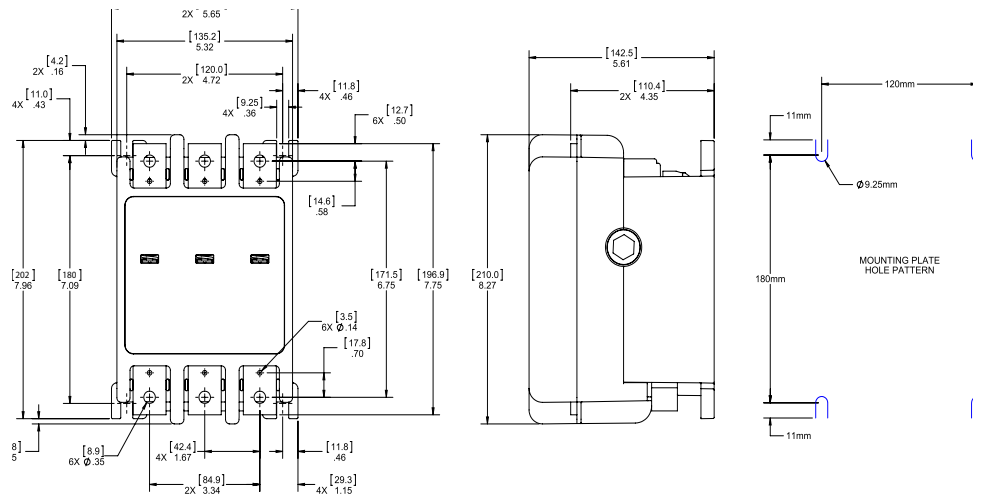




JOSLYN CLARK INTRODUCES NEW 300 AMP, 1140 VOLT HEAVY DUTY MINING VACUUM CONTACTOR

As one of the most demanding industries for rugged duty, mining equipment requires reliable power switching and motor-starting solutions to ensure dependable productivity in harsh environments. Joslyn Clark vacuum contactors are recognized by the leading coal-mine machine builders for applications on long-wall mining equipment, continuous miners, conveyors, power centers and other related equipment. We developed our newest product, the 300 Amp, 1140 Volt Vacuum Contactor, to meet the specific needs of our partners in the mining industry.

In addition to meeting those power requirements, the new vacuum contactor offers several other benefits. For an industry in which space is critical, the new 1140 features a small footprint. This rugged contactor can be mounted in any plane and is front accessible. It also features a long electrical life and the kind of durability and reliability you've come to expect from Joslyn Clark vacuum contactors. Whatever your requirements, Joslyn Clark has the contactor and motor-starting system solutions to meet your needs.



TECHNICAL SPECIFICATIONS - 300 AMP, 1140 VOLT

Cat # CV 77U033A12

Designed to Standard IEC 60947-4-1, UL508, CSA22.2	
Power Ratings Enclosed	
Insul. & Operating Volt	1.14kV
Rated impulse withstand voltage	8kV
Rated Operating current Utilization category AC1	AC1 at 40C = 330 A
	AC1 at 60C = 300 A
Rated Power for AC loads (resistance heating) P.F. = 0.95 (at 60C)	
	230 V 73kW
	400 V 197kW
	500 V 246kW
	690 V 340kW
	1000 V 492kW
AC-3	
Rated Operating current Utilization category AC3 1.14kV	300 A
Rated Power for squirrel-cage motors 50 and 60 hz 1.14kV	428kW
Thermal load capacity short time current 10sec. current	2400 A
AC-4	
Rated Operating current Utilization category AC4 1.14kV	98A
Rated Power for squirrel-cage motors 50 and 60 hz AC4 1.14kV	140kW
Switching frequency operations per hour	600 (1 evry 6 sec.)
Rated Frequency	50 -60 Hz
Making Current	3,000A
Breaking Current	2,400A
Dielectric Strength	6Kv - 1 Min. Interrupter
Interrupting Current	3.4kA
Short Time Current 1 Sec.	6.0kA
Short Time Current 10 Sec	2.4kA
Elect. Life AC3 Duty	1.0 million
Switching Frequency	600 / Hour (1 Every 6 Sec)
Withstand Current	14KA 50MSec
Operating Range	-30% + 25% - at Range Voltage
Pick-Up Voltage	70% Cold 75% Hot or less
Drop-Out Voltage	70% or less
Closing Power VA	1680VA <100ms Duration
Holding Power VA	17VA
Auxiliary Contacts - Standard	2 NO & 2NC
Auxiliary Contacts - Option code -A22	4NO & 4NC
Applications Ratings	All Planes (Contactor only)
Altitude	6600 ft. 2000 Meters
Ambient Storage temperature range	-55C ... +80C
Operating ambient temperature range	-25C ... +60C
Vibration/Shock	30 min. dwell @40Hz / 50G Shock



2100 West Broad Street
 Elizabethtown, NC 28337-8826
 800.390.6405